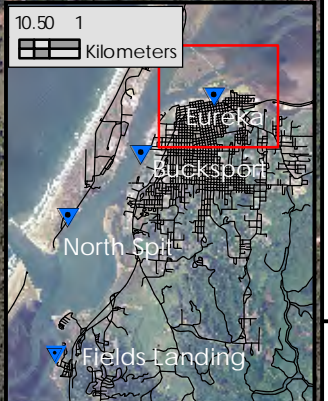


124°15'0"W                      124°13'30"W                      124°12'0"W

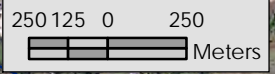


40°42'0"N

40°40'30"N

- L202\_1931
- L389\_1931
- L11271\_15\_1944
- L21206\_1967
- L25050\_1988
- L25053\_1988
- L25377\_1992
- ngsbm\_fl
- ngs\_bm\_hum

2012.04.25 - j.patton, et al.  
<http://cascadiageo.org>



DH3869 notR  
 DH3868 LV0878 notR

LV0875

LV0885

LV0864

LV0260

101

K1041  
 (LV0657)

Barn

tide gage  
 (1970's)

at tide  
 gage location

FILL 2

K1087  
 (LV0255)

notR  
 LV0853

Barn

LV0255

Hookton Rd

Bridge 4-20  
 J1037  
 (LV0253)

+

+

+

+